

ABC Exhibition & Display
the Display Specialists

DIGITAL ADVERTISING
DISPLAYS

0203 137 2834

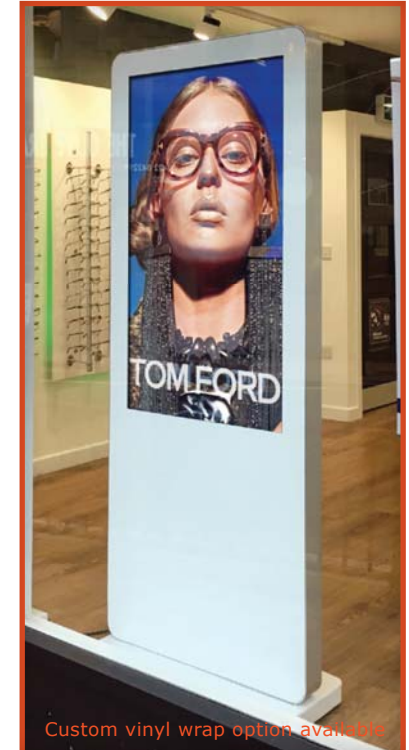
CONTENTS



Introduction	2
Android Advertising Displays & Android Freestanding Digital Posters	3-4
Professional Monitors	5-6
High Brightness Professional Monitors	7-8
Outdoor Digital Advertising Displays & Outdoor Freestanding Digital Posters	9-10
Video Wall Displays	11-12
Infrared Touch Screens with Dual OS	13
Infrared Interactive Multi Touch Displays	14
PCAP Touch Screens with Dual OS	15-16
Android Cloud Network Media Player	17
Android Cloud Network Media Player with Live Input	18
Android Standalone Media Player	19
POS Android Advertising Displays	20
Android All-in-One Network Screens	21-22

What's New...

We are proud to announce an array of new products such as our ground-breaking PCAP Touch Screens with Dual OS (pages 15-16), our new Android Cloud Network Media Player with Live Input (page 18) as well as the addition of a 10" POS Android Advertising Display (page 20). Our Wall Mounted and Freestanding Infrared Touch Screens now also come with both Android and Windows operating systems pre-installed (page 13). All Professional Monitors (pages 5-6) and the Video Wall Displays (page 11) now come with an even thinner bezel and also feature a brand new IPS panel that offers superior image quality. Using our network solution you can now send content from your PC to your screens in a matter of seconds thanks to our new "Rapid Publishing" tool. Finally, we are proud to announce that all of the products featured in this brochure now come with a full 3 year commercial warranty and lifetime technical support as standard.



Custom vinyl wrap option available

INTRODUCTION

Designed to Accommodate Your Needs.

Our user friendly Digital Advertising Displays come in a variety of styles and sizes. All of our products are designed for constant 24/7 public usage; achieved by using commercial grade panels and components. This ensures that the ultra-sharp colours don't fade over time, as they would with other panels found in TVs and PC monitors. To protect against potential damage or tampering from the public our Android displays have a mild steel enclosure, a stylish tempered glass front panel, no easily accessible buttons or controls and a locker door to prevent any unwanted updates. They also feature a number of AV inputs for use as a monitor and feature eco-friendly power timers. As we manufacture the screens any pre-production modifications can be made.



The Simplicity of Plug and Play.

Thanks to their built in USB media players most of our products use a straightforward plug and play system. Simply load your pictures and videos onto a USB memory stick then insert it into the display, which will copy the files into its internal flash memory. Once you remove the memory stick the screen will then start playing the pictures and videos in a continuous loop. For more advanced requirements the free Scheduling Software included with the screen can be used.

Our Android Advertising Displays and Android Freestanding Digital Poster ranges have a simple plug and play system to manually update content. Their flexible future proof design allows them to be upgraded to an All-in-One Network Display by simply changing a setting on-screen, without the need for any additional hardware. This allows you to remotely update your screen the internet via our cloud-based portal.

For more intricate applications an easy to use piece of free Scheduling Software is included with the standalone Android models, which allows the user to create playlists for different times of the day. For example if the display were to be used as a digital menu board, it could show the breakfast menus in the morning and lunch menus in the afternoon.



ANDROID ADVERTISING DISPLAYS & ANDROID FREESTANDING DIGITAL POSTERS



24/7 Usage



Plug and Play Media Player



LED Backlight Technology



Free Scheduling Software



High Definition Display



Eco-Friendly Power Timer



Integrated Speakers



Scrolling Text Message



Multiple AV Inputs

Easy USB Update - Simply load your media onto a USB stick, then plug and play. They require no additional hardware such as PCs, DVD players, excess cables or software.

Tablet-Like Styling - Buttonless tempered glass frontage, rounded corners, super slim profile and aluminium frame all add to their attention-grabbing aesthetics.

Scrolling Text Message - Compliment your content and get your message across.

Constant Use - Commercial grade panel and components provide a wide viewing angle, improved colour, contrast and brightness as well as the ability to be used 24 hours a day.

Free Scheduling Software - Included is simple and intuitive piece of software which allows you to schedule different media and scrolling text to play at different times of the day.

Free Landscape/Portrait Wall-Mount - Included with the wall-mounted models is a free super slim wall mounting plate that allows you to mount your screen in either landscape or portrait orientation.

Use as a Monitor - HDMI and VGA inputs allow you to connect external devices such as a PC or external media player (these can be hidden internally in the freestanding displays).

Upgrade to Network - You can also upgrade your screen to be networked, allowing you to remotely update your screen via LAN, Wi-Fi or 3G with just the flick of a switch and no need for any additional hardware (see pages 20-22).



Android Freestanding Digital Posters		
Display Size	50 inch	55 inch
Resolution	1080x1920	
Display Area (mm)	618.4x1097.8	682x1211
Aspect Ratio	16:9	
Unit Size (WxHxD mm)	747x1850x50	840x1960x80
Package Size (WxHxD mm)	850x2000x565	1006x2200x613
Net Weight (kg)	90	120
Gross Weight (kg)	110	125
Brightness (cd/m ²)	500	
Colour	16.7M	
Viewing Angle	178°	
Contrast Ratio	4000:1	
Power Consumption (W)	100	120
Input Voltage	AC110~240V(50Hz~60Hz)	
Working Temperature	0 °C to 50 °C	
Media Formats	Video (MPG, AVI, MP4, RM, RMVB, TS), Audio (MP3, WMA), Image (JPG, GIF, BMP, PNG)	
AV Signal Inputs	HDMI, VGA, Audio Socket (3.5mm)	
Audio	6W, 8Ω (x2)	
Internal Flash Memory	6GB	
Accessories	Remote control, Scheduling Software CD, Key, User Manual	

Android Advertising Displays					
19 inch	22 inch	32 inch	42 inch	50 inch	55 inch
1366x768	1920x1080				
408.6x229.6	478x269	699x394	932x525	1075.6x605.4	1207x678
16:9					
501x322x38	590x383x33.7	814x504x40	1046x639x46	1199x736x44	1366x837x50.1
580x430x120	655x485x120	960x630x135	1175x775x165	1360x880x170	1525x1016x214
5.9	8.5	15.5	24.7	30.5	47
7.8	10.3	19.8	30	38.3	54
450		500	450	500	
16.7M					
178°					
3000:1					
16	20	50	80	100	113
AC110~240V(50Hz~60Hz)					
0 °C to 50 °C					
Video (MPG, AVI, MP4, RM, RMVB, TS), Audio (MP3, WMA), Image (JPG, GIF, BMP, PNG)					
HDMI, VGA, Audio Socket (3.5mm)					
2W, 5Ω (x2)			5W, 8Ω (x2)		
6GB					
Remote Control, Scheduling Software CD, Wall Mount, Key, User Manual					



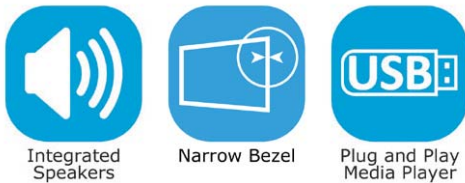
PROFESSIONAL MONITORS



Designed for Information Display - CCTV control rooms, rail stations, airports, financial institutions and general public information environments.



Commercial Grade Panel and Components - Using a commercial grade panel with a lifespan of 50,000 hours, and high quality components ensures that the displays can be in constant use 24/7.



Automatic Tiling - All monitors 55" and under can be used individually or as part of a budget friendly Video Wall Solution thanks to their built in video matrix processor that does not require any additional hardware.

Commercial IPS Panel - These screens now come with an IPS panel that offers superior colour uniformity, viewing angle and remarkable vibrancy, even when mounted in portrait. These also allow for a super narrow bezel on the display.

Simple Integrated Media Player - As well as having AV inputs, these displays also have a built-in HD media player allowing you to run your images and videos from a USB drive without the need for additional hardware.

Integrated Speakers - Featuring two integrated slimline speakers for applications that involve an audio element.

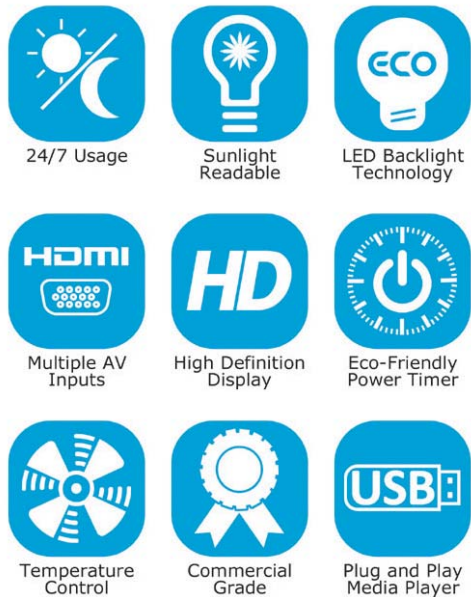
Eco-Friendly Power Timer - Allows for a reduced power usage in the hours that the displays are not required.



Professional Monitors							
Display Size	32 inch	43 inch	49 inch	55 inch	65 inch	70 inch	84 inch
Resolution	1920x1080						3840x2160
Display Area (mm)	703.4x397.9	941.2x529.4	1078.38x608.6	1214.2x685	1432.5x807	1549.44x871.56	1863.5x1049.63
Pixel Pitch	0.36375x0.36375	0.49x0.49	0.55926x 0.55926	0.63x0.63	0.744x0.744	0.807x0.807	0.970x0.970
Unit Size (WxHxD mm)	723.4x442.9x56.8	963.6x557.9x57.5	1096.18x632.5x57.5	1232x708.9x57.5	1468.5x843x91.21	1612x934x83.1	1915x1107x93
Net Weight (kg)	8	14	19	23.2	57	63.2	83.5
Gross Weight (kg)	10	18.5	24	30	66.1	68	175.5
Brightness (cd/m ²)	450						
Colour	16.7M				1.07G	16.7M	1.06B
Viewing Angle	178°						
Contrast Ratio	4000:1				5000:1	4000:1	2000:1
Power Consumption (W)	38	45	55	65	280	350	420
Working Temperature	0 °C to 50 °C						
Media Formats	Video (MPG, AVI, MP4), Audio (MP3, WMA), Image (JPG, BMP, PNG)						
AV Signal Inputs	HDMI, VGA, Audio Socket (3.5mm)						HDMI (1080p), HDMI (4K), VGA, DVI, AV1, AV2, YPbPr, RGB/HV, Audio Socket (3.5mm)
Audio	2x2W, 4Ω						
Lifespan (hours)	50,000						
Accessories	Remote Control, User Manual, Power Lead						



HIGH BRIGHTNESS PROFESSIONAL MONITORS



Sunlight Readable - Commercial grade ultra-high brightness panels with LED backlight (1,500 cd/m²); more than 4 times brighter than a standard domestic TV to allow easy readability in direct sunlight, making them ideal for outward facing window displays.

Advanced Temperature Control - Internal fans keep the panel and other internal components at the optimum working temperature; ensuring a long and reliable life for your screen even in direct sunlight.

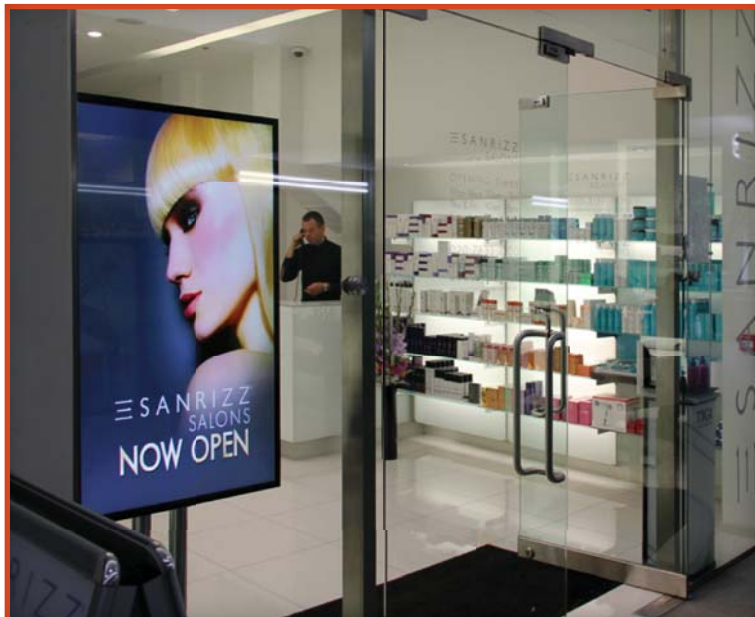
Eco-Friendly Power Timer - Allows for a reduced power usage in the hours that the displays are not required.

Integrated Speakers - Featuring two integrated slimline speakers for applications that involve an audio element.

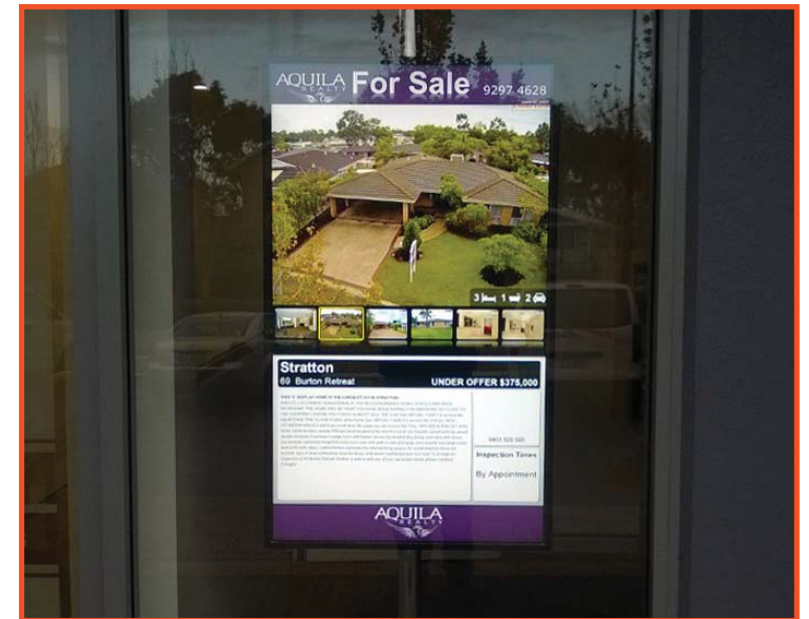
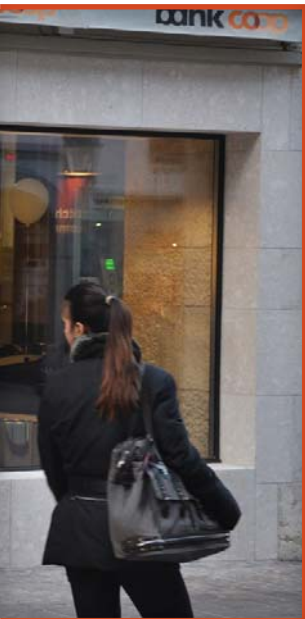
Commercial Grade Panel and Components - Using a panel with a lifespan of 50,000 hours, and high quality components ensures that the displays can be in constant use 24/7.

Integrated Media Player - As well as having AV inputs for monitor use, these displays also have a built-in HD media player allowing you to run your images and videos from a USB drive without the need for additional hardware.

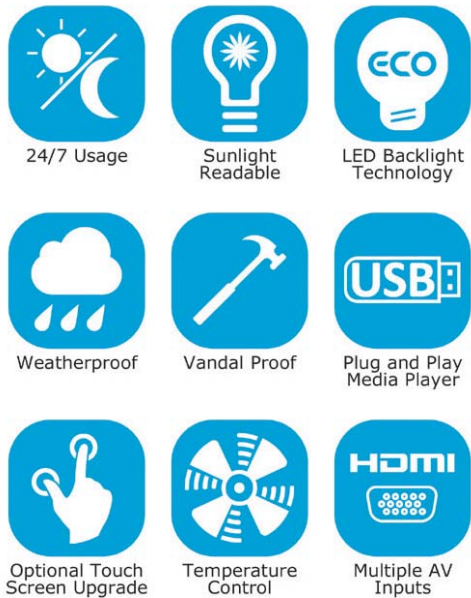
Upgrade to Network - You can also upgrade your screen to be networked, allowing you to remotely update your screen via LAN, Wi-Fi or 3G with just the flick of a switch and no need for any additional hardware (see pages 20-22).



High Brightness Professional Monitors					
Display Size	32 inch	42 inch	47 inch	55 inch	65 inch
Resolution	1920x1080				
Display Area (mm)	699x393	936x527	1041x583	1214.6x685.4	1434x808
Pixel Pitch	0.10725x0.51075	0.4845x0.4845	0.54x0.54	0.63x0.21	0.744x0.744
Unit Size (WxHxD mm)	767.6x457.6x81.3	987x580x83	1103.6x647.6x95	1275.6x746.4x109	1518x888x116
Brightness (cd/m ²)	1500				
Colour	16.7M		1.06B	16.7M	
Viewing Angle	178°				
Contrast Ratio	4000:1	3000:1	5000:1		
Power Consumption (W)	180	230	300	340	420
Working Temperature	0 °C to 50 °C				
Media Formats	Video (MPG, AVI, MP4), Audio (MP3, WMA), Image (JPG, BMP, PNG)				
AV Signal Inputs	HDMI, VGA, Audio Socket (3.5mm)				
Audio	2x2W, 4Ω				
Lifespan (hours)	50,000				
Accessories	Remote Control, User Manual, Power Lead				



OUTDOOR DIGITAL ADVERTISING DISPLAYS & OUTDOOR FREESTANDING DIGITAL POSTERS



Sunlight Readable - Commercial grade ultra-high brightness panels (1,500 cd/m²); more than 4 times brighter than a standard domestic TV to allow easy readability in direct sunlight.

Stylish Outdoor Enclosure - Robust, tablet-style, casing for defence against the elements and the public. With an IP65 rating, it keeps out airborne particles and protects against any wet weather conditions. The enclosures are made from corrosion protected mild steel, have thermally toughened glass and also feature waterproof over moulded AV connectors.

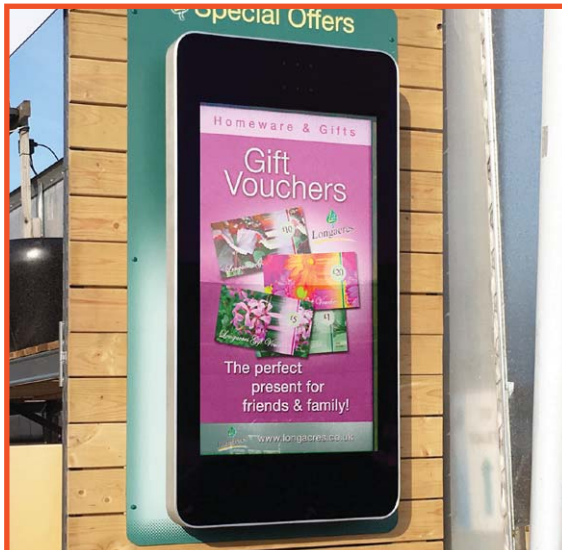
Advanced Temperature Control - Allows the screens to be in constant use in an outdoor environment. Internal fans keep the panel and other internal components at the optimum working temperature; ensuring a long and reliable life for your display.

Anti-Reflective Glass - The glass frontage is also anti-reflective to help defuse direct sunlight shining on the display; improving readability..

Integrated Media Player - As well as having AV inputs, these displays also have a built-in HD media player allowing you to run content copied from a USB drive. They can also be upgraded to be updated remotely via LAN, Wi-Fi or 3G using our cloud-based CMS. This is done by simply changing a setting on-screen and requires no additional hardware.

Free Landscape/Portrait Wall Mount - Included with the wall-mounted units is a free wall mounting bracket that allows you to install your display in either landscape or portrait orientation and lock it in place.

Modifications - Whether your project calls for a touch screen, a double-sided display or even a bespoke screen size, we can meet your needs.



Outdoor Freestanding Digital Posters		
Display Size	47 inch	55 inch
Display Area (WxH mm)	590x1045	686x1215
Resolution	1080x1920	
Pixel Pitch	0.5415x0.5415	0.21x0.63
Colour	1.06 Billion	1.073 G
Brightness (cd/m ²)	1500	
Contrast Ratio	8000:1	
Viewing Angle	178°	
Response Time	10ms	4.5ms
AV Inputs	VGA, HDMI	
Operating Voltage	AC100-240V(50Hz-60Hz)	
Power Consumption (W)	530	580
Enclosure Protection	IP65	
Lifetime (hours)	50,000	
Overall Unit Size (WxHxD mm)	840x1900x200	930x2000x200
Net Weight (kg)	160	200
Supported Media Formats	Video (MPG, AVI, MP4), Image (JPG, BMP, PNG)	
Accessories	AC Power Cable, Remote Control	
Optional Extras	PCAP Touch Screen Upgrade	

Outdoor Digital Advertising Displays			
32 inch	42 inch	47 inch	55 inch
396x702	526x934	590x1045	686x1215
1080x1920			
0.36375x0.36375	0.1615x0.4845	0.5415x0.5415	0.21x0.63
1.06 Billion	16.7 M	1.06 Billion	1.073 G
1500			
8000:1			
178°			
6ms	9ms	10ms	4.5ms
VGA, HDMI			
AC100-240V(50Hz-60Hz)			
190	250	300	350
IP65			
50,000			
515x1040x110	670x1410x120	726x1470x130	818x1640x130
32.35	50	63.5	80
Video (MPG, AVI, MP4), Image (JPG, BMP, PNG)			
AC Power Cable, Remote Control, HDMI Cable, Lockable Wall Mount			
PCAP Touch Screen Upgrade			



VIDEO WALL DISPLAYS



Commercial IPS Panel - All Video Wall Displays now come with an IPS panel that offers superior colour uniformity, viewing angle and remarkable vibrancy, even when mounted in portrait. Also these panels do not suffer from blackening defect when used as a window display.

Super Narrow Bezel - Create a virtually seamless video wall with a total bezel size as narrow as 3.5mm between displays.

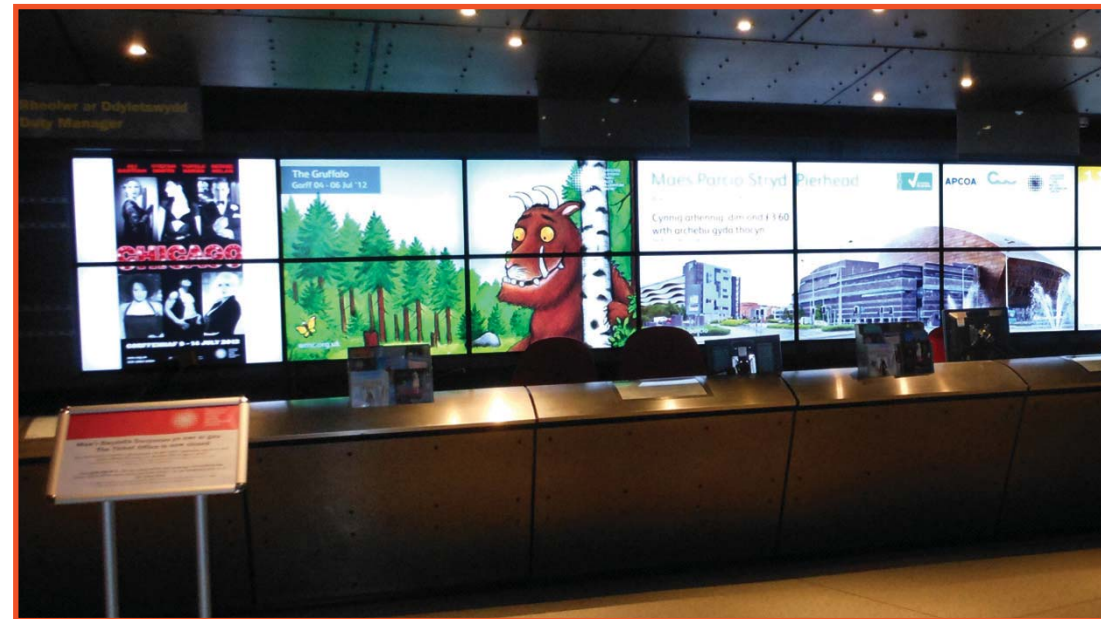
LED Backlight - Offers improved brightness and contrast as well as drastically improving their lifespan and reducing their power consumption.

Automatic Tiling - Built-in video matrix processor allows you to set your video wall up with any configuration without any additional hardware.

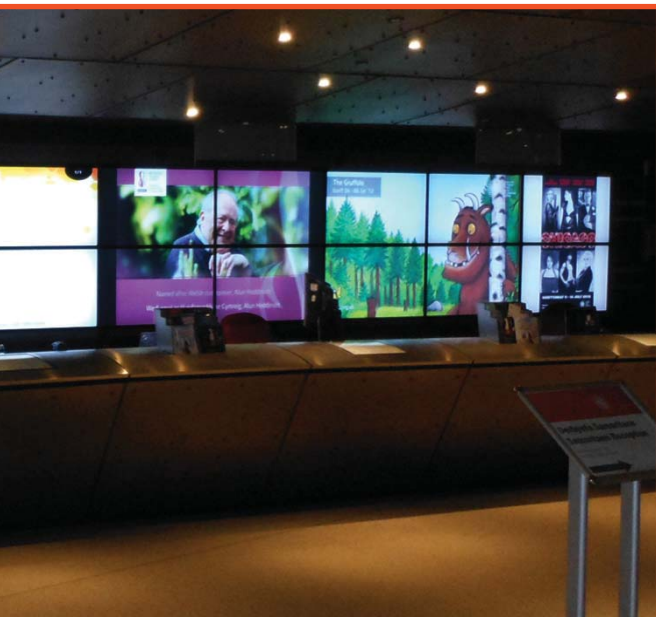
Multiple AV Inputs - Powerful interface supporting HDMI, Composite Video, VGA, DVI, RGB/HV and YPbPr.

Air Conditioning - Smart temperature control system allows them to be in constant use.

Eco-Friendly Power Timer - Allows for reduced power usage in the hours that the displays are not required.



Video Wall Displays				
Display Size	49 inch	46 inch (High Brightness)	55 inch	55 inch (High Brightness)
Bezel Size (mm)	Bottom/right: 2.34, Top/left: 1.16	Bottom/right: 1.8, Top/left: 3.7	Bottom/right: 1.2, Top/left: 2.3	
Resolution	1920x1080			
Display Area (WxH mm)	1074x600.8	1018.6x573.2	1209.9x680.7	1210x680.8
Aspect Ratio	16:9			
Pixel Pitch (HxW mm)	0.56x0.56	0.53025x0.53025	0.63x0.63	
Unit Size (WxHxD mm)	1077.5x604.3x113.8	1024.1x578.7x125.2	1213.4x684.2x117.9	1213.5x684.3x110.3
Response Time	8ms			
Colour	1.07B	16.7M		
Brightness (cd/m ²)	500	700	500	700
Contrast Ratio	4000:1	3500:1	4000:1	
Colour Temperature	10000K			
Viewing Angle	178°			
Power Consumption (W)	155	148	160	189
Lifetime (hours)	50,000			
AV Inputs	Video, VGA, DVI, RGB/HV, YPbPr, HDMI			
Accessories	Remote control, AC Power Cable, User Manual, HDMI Cable, OSD Control Box			



INFRARED TOUCH SCREENS WITH DUAL OS



Dual OS - Both Windows and Android operating systems come pre-installed on the screen's internal PC and require no additional hardware.

Infrared Touch - These screens use infrared touch technology offering the most robust touch experience available, this ideal for public locations as activating the touch function requires no pressure, incurring less damage over time.

10 Touch Points - Supports up to ten touch points at once, for group interaction.

LED Backlight - Offers improved brightness and contrast, increases their lifespan and reduces power consumption.

24/7 Usage - Built with commercial grade panel and components and are designed for over 50,000 hours of continuous use.

Attach External Devices - If you don't want to use the internal PC then HDMI and VGA inputs allow you to connect the display to external devices, also via USB for touch functionality.

Touch Kiosk - We also offer an Infrared touch kiosk that has 6 touch points and can be used with multiple OS's including Android, Windows and Linux.

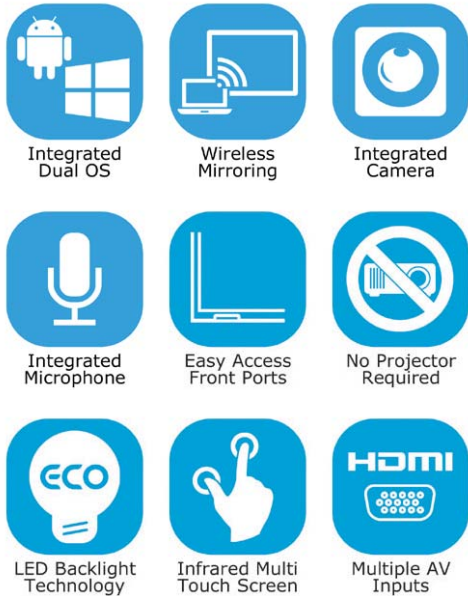


Wall-Mounted Infrared Touch Screen with Dual OS				
Screen Size	32 inch	43 inch	50 inch	55 inch
Resolution	1920x1080			
Display Area (WxH mm)	703x397.5	943.4x531.6	1076x606	1215x685.6
Product Size (WxHxD mm)	760.3x454.9x72.3	1006.2x594.2x73	1134.2x665.2x73	1273.8x744.4x73
Pixel Pitch	0.369x0.369	0.4958x 0.4958	0.565x 0.565	0.6342x 0.6342
Contrast Ratio	5000:1			
Brightness (cd/m ²)	450			
Touch Technology	Infrared			
Touch Points	10			
Glass Hardness	7H minimum			
Speakers	2W, 5Ω (x2)			
AV Inputs	VGA, HDMI, Audio Socket (3.5mm)			
Computer	CPU	Intel® Atom (Quad-core) Z3735F (2M Cache, up to 1.83 GHz)		
	RAM	2GB (DDR3L-RS 1333)		
	Available Memory	Windows - 50GB, Android - 5GB		
	USB	2 x USB 2.0		
	LAN	10/100M Ethernet		
	Wi-Fi	802.11b/g/n		
OS	Android 4.4.4 KitKat Windows 10 IoT Enterprise (licence purchased separately)			
Accessories	Remote Control, User Manual, Power Cable, USB to USB Cable, Wi-Fi Aerial			

Freestanding Infrared Touch Screen with Dual OS		
50 inch (Portrait)	55 inch (Portrait)	
Resolution		
1080x1920		
Display Area (WxH mm)	625.4x1106.4	
Product Size (WxHxD mm)	766x1850x79.5	
Pixel Pitch	0.565x 0.565	
Contrast Ratio	5000:1	
Brightness (cd/m ²)	450	
Touch Technology	Infrared	
Touch Points	10	
Glass Hardness	7H minimum	
Speakers	6W, 8Ω (x2)	
AV Inputs	VGA, HDMI, Audio Socket (3.5mm)	
Computer	CPU	Intel® Atom (Quad-core) Z3735F (2M Cache, up to 1.83 GHz)
	RAM	2GB (DDR3L-RS 1333)
	Available Memory	Windows - 50GB, Android - 5GB
	USB	2 x USB 2.0
	LAN	10/100M Ethernet
	Wi-Fi	802.11b/g/n
OS	Android 4.4.4 KitKat Windows 10 IoT Enterprise (licence purchased separately)	
Accessories	Remote Control, User Manual, Power Cable, USB to USB Cable, Wi-Fi Aerial	

Infrared Touch Kiosk	
Screen Size	42 inch (Landscape)
Product Size (WxHxD mm)	1060x1082.6x652.9
Display Area (WxH mm)	934.2x527.3
Pixel Pitch	0.4845x0.4845
Resolution	1920x1080
Brightness (cd/m ²)	450
Aspect Ratio	16:9
Contrast Ratio	3000:1
Viewing Angle	178°
Colours	16.7M
Colour Temperature	10000K
Lifetime (hours)	50,000
Touch Resolution	4096x4096
Minimum Touch Object	5.2mm
Operating System	6-Point - Android, Linux, Windows XP/2003/Vista/7/8, 1-Point - Mac
Speakers	6W, 8Ω (x2)
AV Inputs	VGA, HDMI, Audio Socket (3.5mm)
Power Consumption (W)	65
Net Weight (kg)	75
Gross Weight (kg)	90
Accessories	Remote control, AC power cable, USB cable, HDMI cable

INFRARED INTERACTIVE TOUCH DISPLAYS WITH DUAL OS



Dual OS - Both Windows and Android Operating Systems come pre-installed on the displays internal PC and require no external hardware.

Wireless Mirroring - Broadcast from a mobile phone, tablet or computer. Mirror what is on your Windows, Android or Apple device without needing to connect any cables.

10 Touch Points - Supports up to ten touch points at once, for group interaction. Use your finger or a stylus as your cursor.

Built-in Camera/Microphone - Record your meetings and lessons with the integrated 5 megapixel front facing camera and microphone.

Easy Access Ports - Should you want to you can conveniently connect a laptop, or another external device, to the display's front ports. For more permanent connections there are a variety of AV inputs on the rear of the unit.

Etched and Anti-Glare Glass - Defuses external light sources increasing readability and makes touch movements smoother; ideal for group interactivity.

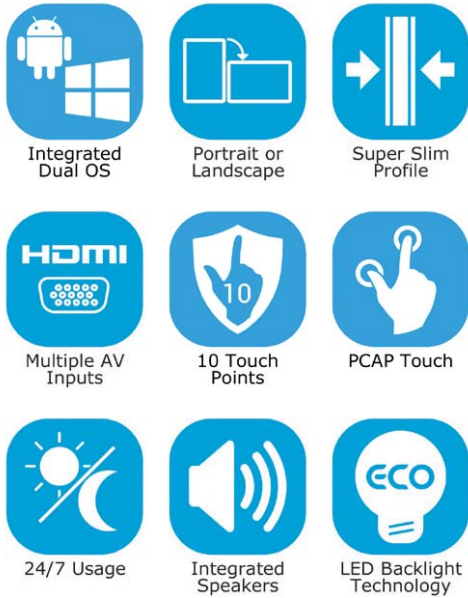
Budget-Friendly Version - A more basic version of this product which does not have an integrated PC, camera or microphone is available on request.



Infrared Interactive Touch Displays with Dual OS		
Screen Size	65 inch	70 inch
Resolution	1920x1080	
Display Area (WxH mm)	1431x807	1555x875
Product Size (WxHxD mm)	1503.6x901.58x84.88	1617.8x961.9x88.5
Contrast Ratio	4000:1	
Brightness (cd/m ²)	450	
Touch Points	10	
Camera	5 Megapixel CMOS Sensor, Supports 1080p Video Recording	
Microphone	Directional Microphone with Range up to 45m ²	
Speakers	Front 2x15W	
Inputs (front)	Touch USBx1, HDMI x1, PC USB x3	
Inputs (side)	AV/Audio, RS232 Port, VGA/Audio. HDMI, USB, Touch USB	
Computer	CPU	Intel® Atom (Quad-core) Z3735F (2M Cache, up to 1.83 GHz)
	RAM	2GB (DDR3L-RS 1333)
	Internal Memory	64GB
	USB	2 x USB 2.0
	LAN	10/100M Ethernet
	Wi-Fi	802.11b/g/n
	OS	Android 4.4.4 KitKat Windows 10 Pro (licence purchased separately)
Accessories	Remote Control x 1, HDMI Cable 1.5M x 1, USB Extension Cable 1.5M x 1, Power Cord x 1, AAA Battery x 2	



PCAP TOUCH SCREENS WITH DUAL OS



Dual OS - Both Windows and Android operating systems come pre-installed on the screens internal PC and require no additional hardware to run either.

PCAP Touch - These screens have projected capacitive interactive technology that offers the most responsive and sensitive touch experience available, it is also used in smartphones and domestic tablets.

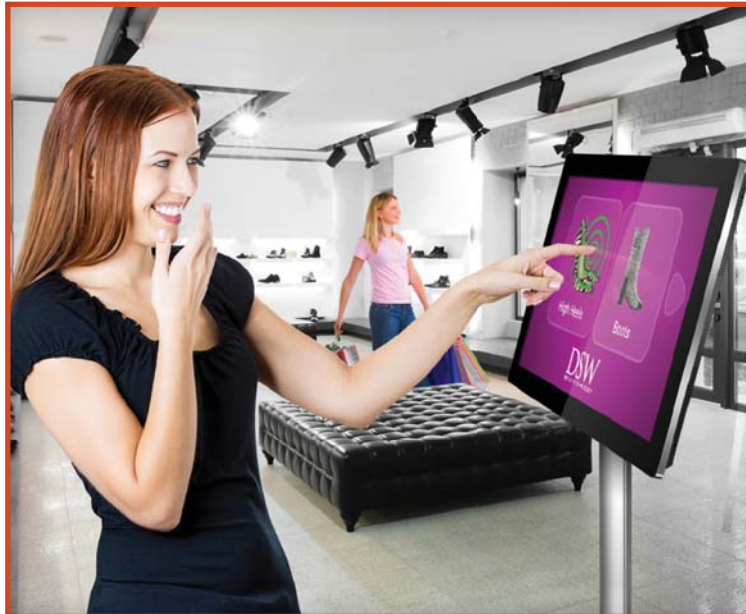
Giant Tablet - Designed to resemble a large domestic tablet with a buttonless edge-to-edge tempered glass front, rounded corners, aluminium frame and a super slim profile these eye catching displays are guaranteed to make an impact.

10 Touch Points - Use the screen in more applications than ever with up to ten touch points allowing you to perform a host of touch gestures, just as you would on a smartphone.

LED Backlight - Offers improved brightness and contrast as well as drastically improving their lifespan and reducing their power consumption.

24/7 Usage - Built with commercial grade panel and components these displays are designed to run over 50,000 hours in constant use.

Attach External Devices - If you don't want to use the internal PC then HDMI and VGA inputs allow you to connect the display to external devices, also via USB for touch functionality.





PCAP Touch Screen with Dual OS			
Display Size	22 inch	32 inch	42 inch
Resolution	1920x1080		
Display Area (mm)	478x269	699x394	932x525
Aspect Ratio	16:9		
Pixel Pitch (mm)	0.08265x0.24795	0.51075x0.51075	0.4833x0.4833
Brightness (cd/m ²)	450		
Brightness with touch panel (cd/m ²)	383		
Colour	16.7M		
Viewing Angle	178°		
Contrast Ratio	5000:1		
Touch Technology	Projected Capacitive		
Touch Points	10		
Glass Hardness	7H Minimum		
Unit Size (WxHxD mm)	590x383x50.5	814x504x52.8	1046x639x51
Package Size (WxHxD mm)	655x485x132	960x630x150	1175x775x170
Net Weight (kg)	8	16	26
Gross Weight (kg)	9.5	19	32
Power Consumption (W)	22	52	82
Input Voltage	AC110~240V(50Hz~60Hz)		
Operating Temperature	0°C to 50°C		
Storage Temperature	-30°C to 60°C		
Operating Humidity	10% to 80%		
Storage Humidity	5% to 95%		
AV Signal Inputs	HDMI, VGA, Audio Socket (3.5mm)		
Audio	2W, 5Ω (x2)		
Internal Flash Memory	6GB		
CPU	Intel® Atom (Quad-core) Z3735F (2M Cache, up to 1.83 GHz)		
RAM	2GB (DDR3L-RS 1333)		
Graphic Engine	Intel® HD Graphics (7th Gen, supports DirectX 11 and up to 646 MHz)		
Available Memory	Windows - 50GB, Android - 5GB		
USB	2 x USB 2.0		
LAN	10/100M Ethernet		
Wi-Fi	802.11b/g/n		
OS	Android 4.4.4 KitKat Windows 10 IoT Enterprise (licence purchased separately)		
Accessories	Remote Control, User Manual, Power Cable, USB to USB Cable, Wi-Fi Aerial		

ANDROID CLOUD NETWORK MEDIA PLAYER



Android Cloud Network Media Player		
Video Outputs	HDMI, VGA	
Audio Outputs	Stereo Analog Audio Socket (3.5mm)	
Power Consumption (W)	<5	
Input Voltage	AC110~240V (50Hz~60Hz)	
Unit Size (WxHxD mm)	156x104x34	
Internal Media Player	Media Formats	Video (MPG, AVI, MP4, RM, RMVB, TS), Audio (MP3, WMA), Image (JPG, GIF, BMP, PNG)
	Media Resolution	1920x1080/1080x1920
	Available Memory	6GB
	CPU	Quad-Core Cortex-A9 @1.6GHz
	GPU	Mali-400 MP4 @600MHz
	RAM	1GB DDR3
	ROM	8GB NAND
	USB	USB2.0 HOST (x2)
	LAN	10/100M Ethernet
	Wi-Fi	802.11b/g/n
OS	Android 4.2.2	
Graphic Engine	OpenGL ES 1.1/2.0, OpenVG 1.1	
Special	Images, Videos, Audio, Scrolling Text Message, On/Off Timer, On Screen Clock, Media Rotation	
Included	HDMI Cable, Scheduling Software, Remote Control, User Manual	

Transforms your screens into cloud based Digital Advertising Displays that can be updated from anywhere with an internet connection.

Login to our cloud based portal (www.MySignagePortal.com) to upload content, design multi zoned media layouts, create playlists and schedule content.

You can control most of your screen's functions via the CMS, such as playing and stopping content as well as volume control; a truly centralised solution.

Connecting the Android Cloud Network Media Player to your screen, by HDMI or VGA, allows you to update your screen wirelessly (via a Wi-Fi network) or via a Local Area Network (LAN) connection.

No software installation is required, control via our cloud based server.

The screens in your network can all be under one roof or as part of a national or even global network.

ANDROID CLOUD NETWORK MEDIA PLAYER WITH LIVE INPUT



You can now transform your existing screens into cloud based Digital Advertising Displays that can even feature a media zone for your live television input.

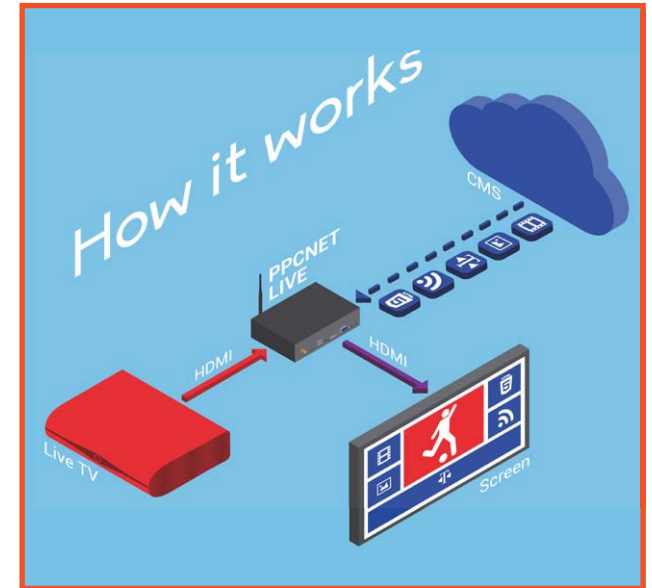
Simply plug your set-top television box, or desired input source, into the Android Cloud Network Media Player with Live Input via HDMI. Then connect the player to your screen via HDMI, you can then manage everything from our cloud based portal (www.MySignagePortal.com). It can even support HDCP protected content.

Design multi zoned layouts to display your TV feed alongside your videos, images, backgrounds, webpages, RSS feeds, scrolling text, time and date.

As well as the ability to schedule your content to play at specified times and dates you can also control most of your screen's functions via the CMS, such as playing and stopping content and even volume control; a truly centralised solution.

No software installation is required, control what your screens display via our cloud based server.

The screens in your network can all be under one roof or as part of a national or even global network.



Android Cloud Network Media Player with Live Input		
Video/Audio Inputs	HDMI, VGA, Stereo Analog Audio Socket (3.5mm)	
Video/Audio Outputs	HDMI, VGA, Stereo Analog Audio Socket (3.5mm)	
Power Consumption (W)	<5	
Input Voltage	AC110~240V (50Hz~60Hz)	
Unit Size (WxHxD mm)	190x110x39.5	
Internal Media Player	Media Formats	Video (MPG, AVI, MP4, RM, RMVB, TS), Audio (MP3, WMA), Image (JPG, GIF, BMP, PNG)
	Media Resolution	1920x1080/1080x1920
	Available Memory	6GB
	CPU	Quad-Core Cortex-A9 @1.6GHz
	GPU	Mali-400 MP4 @600MHz
	RAM	2GB DDR3
	ROM	8GB NAND
	USB	USB2.0 HOST (x3)
	LAN	10/100M Ethernet
	Wi-Fi	802.11b/g/n
OS	Android 4.2.2	
Graphic Engine	OpenGL ES 1.1/2.0, OpenVG 1.1	
Special	Images, Videos, Audio, Scrolling Text Message, On/Off Timer, On Screen Clock, Media Rotation	
Included	HDMI Cable, Scheduling Software, Remote Control, User Manual	



ANDROID STANDALONE MEDIA PLAYER



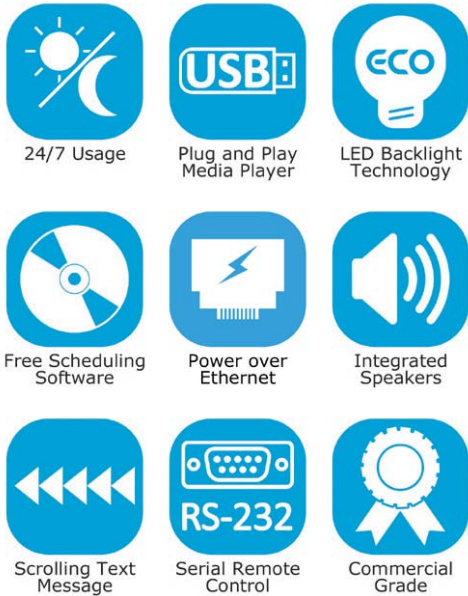
Android Standalone Media Player		
Video Outputs	HDMI, VGA	
Audio Outputs	Stereo Analog Audio Socket (3.5mm)	
Power Consumption (W)	<5	
Input Voltage	AC110~240V (50Hz~60Hz)	
Unit Size (WxHxD mm)	156x104x34	
Internal Media Player	Media Formats	Video (MPG, AVI, MP4, RM, RMVB, TS), Audio (MP3, WMA), Image (JPG, GIF, BMP, PNG)
	Media Resolution	1920x1080/1080x1920
	Available Memory	6GB
	CPU	Quad-Core Cortex-A9 @1.6GHz
	GPU	Mali-400 MP4 @600MHz
	RAM	1GB DDR3
	ROM	8GB NAND
	USB	USB2.0 HOST (x2)
	LAN	10/100M Ethernet
	Wi-Fi	802.11b/g/n
OS	Android 4.2.2	
Graphic Engine	OpenGL ES 1.1/2.0, OpenVG 1.1	
Special	Images, Videos, Audio, Scrolling Text Message, On/Off Timer, On Screen Clock, Media Rotation	
Included	HDMI Cable, Scheduling Software, Remote Control, User Manual	

Convert existing displays, such as TVs or PC monitors, into Digital Advertising Displays. Connect the media player to your existing screen via HDMI or VGA. You can then control the content displayed on screen through the media player.

Using a simple plug and play method you can load your media files (images, videos and music) onto a USB stick, plug it into the media player and your content will be loaded onto the internal memory card and will display in whatever order you like.

As well as having a full HD output the Android Standalone Media Player also comes with additional Scheduling Software. This easy-to-use application allows you to define duration times and the order of each media file as well as allowing you to display scrolling text alongside your content.

POS ANDROID ADVERTISING DISPLAYS



Easy USB Update - Simply load your media onto a USB stick, then plug and play. They require no additional hardware such as PCs, DVD players, excess cables or software.

Designed for Public Spaces - As well as having a buttonless tempered glass frontage and rounded corners these screens also have an enclosure made from a light-weight polymer so they are ideal for shelf edge and POS displays. They also have a screw-less design to achieve a seamless aesthetic and avoid tampering.

Power over Ethernet (PoE) - If you are updating your screen via LAN the screen can be powered using the Ethernet cable, so you don't even have to plug it into the mains.

Constant Use - Commercial grade panel and components provide a wide viewing angle, improved colour, contrast and brightness as well as the ability to be used 24 hours a day.

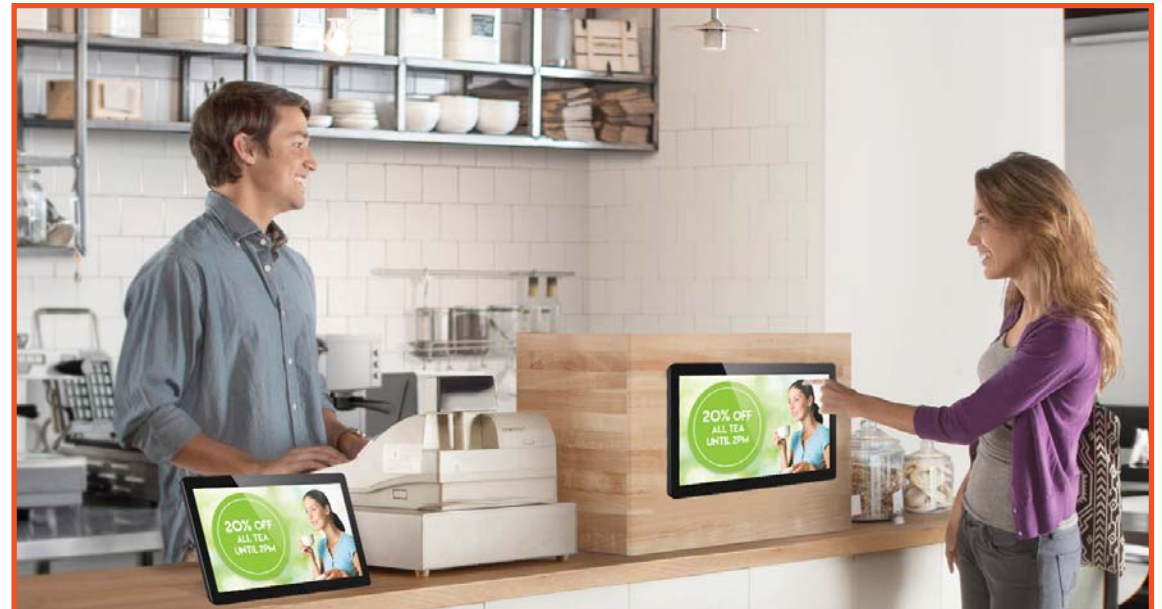
Free Scheduling Software - Included is simple and intuitive piece of software which allows you to schedule different media and scrolling text to play at different times of the day.

RS-232 Remote Control - Once your screen is connected via RS-232 you can control, scale and customise your display remotely over short and long distances.

Scrolling Text Message - Compliment your content and get your message across.

Upgrade to Network - You can also upgrade your screen to be networked, allowing you to remotely update your screen via LAN, Wi-Fi or 3G with just the flick of a switch and no need for any additional hardware (see pages 20-22).

POS Android Advertising Display	
Display Size	10 inch
Resolution	1280x800
Display Area (mm)	217.95x136.65
Aspect Ratio	16:10
Unit Size (WxHxD mm)	239.9x169.2x26.8
Brightness (cd/m ²)	350
Colour	16.7M
Viewing Angle	178°
Contrast Ratio	800:1
Power Consumption (W)	15
Input Voltage	AC110~240V (50Hz~60Hz)
Working Temperature	0 °C to 50 °C
Media Formats	Video (MPG, AVI, MP4, RM, RMVB, TS), Audio (MP3, WMA), Image (JPG, GIF, BMP, PNG)
Audio	1.5W, 8Ω
Internal Flash Memory	6GB
Upgrade	Cloud Network Software, PCAP Touch Screen Upgrade



ANDROID ALL-IN-ONE NETWORK SCREENS

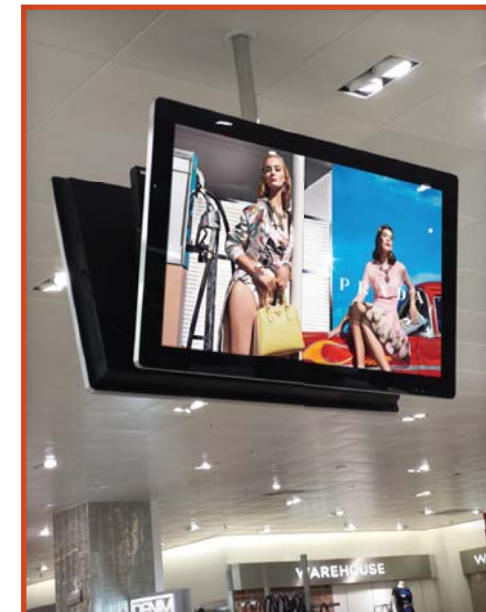


Our Android All-in-One Network Screens have all the necessary networking hardware built-in; making installation a breeze. Other network solutions require you to buy multiple pieces of hardware - making setup and installation much more difficult, as well as the added challenge of concealing all of the extra wires and power leads.

Hardware and software usually come from different sources which can result in confusion and conflict when identifying any potential faults. In contrast to this, any issues with our screens or digital signage software will be dealt with directly by us; one supplier, one solution.

Connectivity - These screens have LAN and Wi-Fi connectivity as standard and can even be upgraded to have 3G connectivity. This means that we can provide a fully integrated cloud based solution for any location – even if broadband access is not available.

Cloud Based CMS - Updating your screens couldn't be simpler. Login to MySignagePortal.com from anywhere in the world to upload media, manage playlists, create your own templates and schedule content for whenever you want; giving you complete control over your network. No special software installation or dedicated PC is required.



Tablet-Style Aesthetics - Buttonless tempered glass face, rounded corners, super slim profile and aluminium surround make them the most striking displays on the market. They have the same appearance and specification as the screens in the standalone Android ranges.

Create Custom Layouts - Design your own layouts with different media zones for your images, videos, webpages, time, date and also allows you to add a scrolling message or RSS feed. Add your logo, create branded "skins" and use your corporate colours to maintain brand consistency.

Display a Live Website - The new Android media player allows you to display a website such as a live estate agent property feed or social network profile.

Run Your Own Software - If you already have a CMS solution this can be loaded onto the internal Android media player.

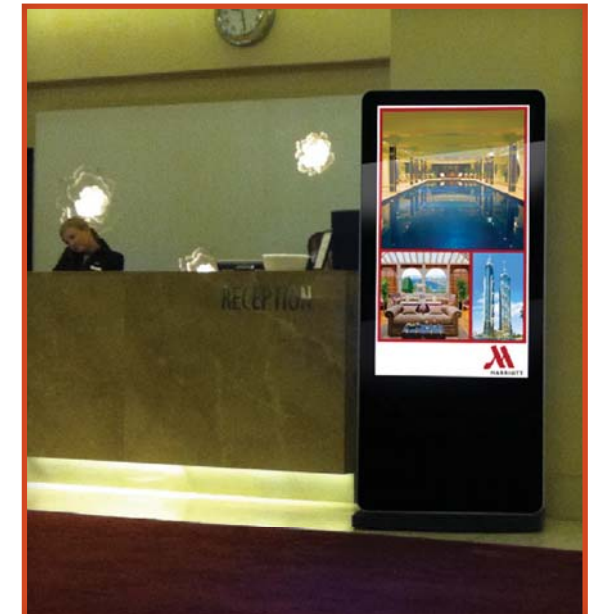
Schedule Playlists - Determine exactly what content is displayed and when. Create playlists that will automatically display your desired content at pre-determined times and dates.

Remote Screen Functions - The CMS allows you to control most of your screen's functions from anywhere, such as rebooting your screen, playing and stopping content, volume control and scheduling on/off times; a truly centralised solution.

Manage Your Users - You may wish to limit some functions or zones to specific users; our system allows full user rights control. A log of all of your user and screen activity is also recorded.

Network Management - Check the status of each screen in your network, you can even preview what they are currently playing.

Supported Features	
Rapid Publishing	✓
Images	✓
Videos	✓
Audio	✓
RSS Feeds	✓
Website/HTML5	✓
Office (Word, Excel, PowerPoint)	✓
PDFs	✓
Multiple Zones	✓
Background Image	✓
Scrolling Text Message	✓
Static Text	✓
Editable Background Colours	✓
Editable Font Colours	✓
Time and Date	✓
Remote Commands	✓
User Management	✓
Multi-screen Synchronisation	✓



ABC Exhibition
& Display
the Display Specialists

0203 137 2834

